

CONDITION REPORT - ELECTRIC

Manufacturer	Model	Year	Serial Number	Corrected
YALE MANUFACTURER	ERC065VG	2014	A968N10433M	A968N10433M

Mast	3 Stage FFL (Triplex)	Hours	4468
Mast Height Lowered	88@	Voltage	36 Volt
Mast Height Raised	187"	Attachment	S/S Fork Positioner
Hydraulic Control Valve	4-Function	Directional Control	Lever
Capacity	6500	Tires	Non-Marking

Mast Condition		Steering Pump Condition	
Mast Comments		Steering Pump Comments	
Lift Cylinder Condition		Hydraulic Pump Condition	
Lift Cylinder Comments		Hydraulic Pump Comments	
Tilt Cylinder Condition		Hydraulic Motor Condition	
Tilt Cylinder Comments		Hydraulic Motor Comments	
Carriage Condition		Control System Condition	
Carriage Comments		Control System Comments	
Load Backrest Condition	Damaged	Drive Motor Condition	
Load Backrest Comments	bent and bar broken	Drive Motor Comments	
Forks Condition		Differential Condition	
Forks Comments		Differential Comments	
Overhead Guard Condition		Drive Tires % Remaining	
Overhead Guard Comments		Drive Tires Condition	
Seat Condition		Steer Tires % Remaining	80%
Seat Comments		Steer Tires Condition	
General Appearance Condition	Fair	Steer Axle Condition	
General Appearance Comments		Steer Axle Comments	
General Comments		Brakes Condition	
		Brakes Comments	
		Battery Present	Yes
		Charger Present	Yes
		Electrical Condition	
		Electrical Comments	

In decent shape

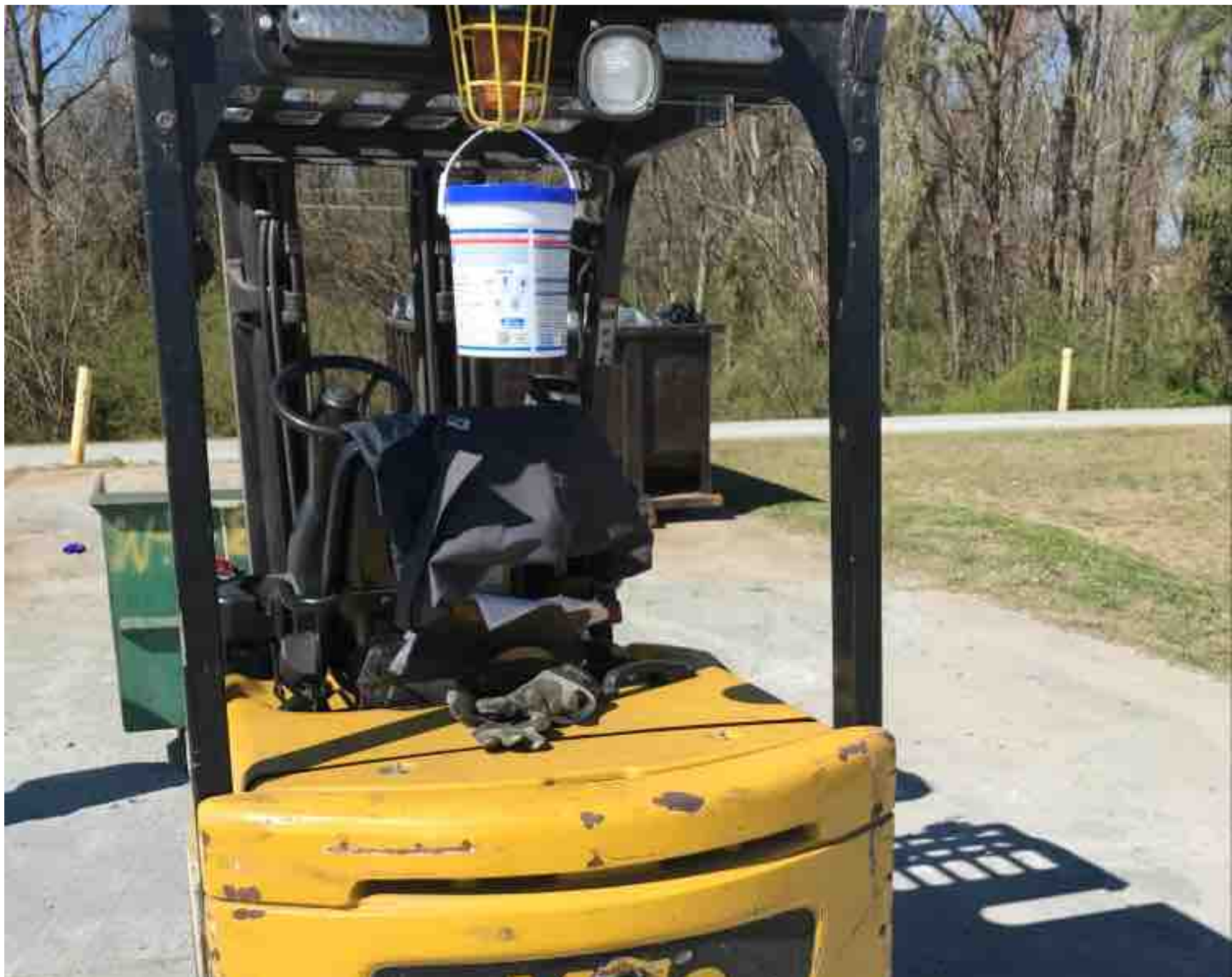
Inspector Company Name	Gregory Poole	Inspection Date	3/18/2019 11:39:57 AM
Inspector Name	bsaunders		

(* Legend: =Checked OK)

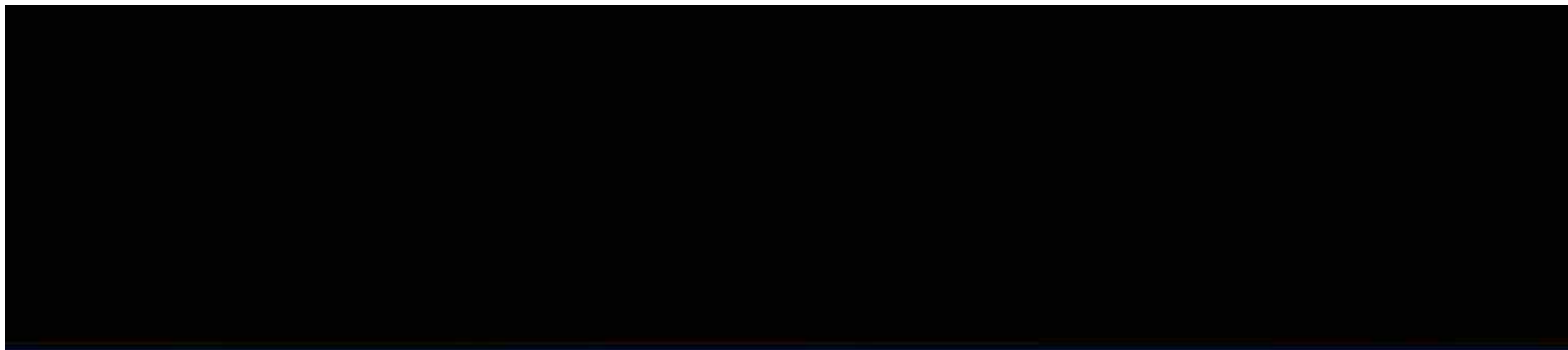












Yale

Lift Truck Model ERC065VGN3STE088

Serial No. A968N10433M

Attachment: 978 mm (39 in) SSFP Crg + 1220 mm (48 in) Forks

Truck Wt. Less Battery 3590 kg (7910 lb) Type E 36 Volts

Truck Wt. Max Battery 5460 kg (12010 lb) Max A.H (6 Hr Rt) 1900

Allowable Battery Wt. 1410 kg (3100 lb) to 1860 kg (4100 lb)

Tread Width 900 mm (35.6 in) Back Tilt 5 Degrees

Tire Front Rear

Size 21X8X15 Cushion

16X6X10.5 Cushion

Pressure —

MAXIMUM CAPACITY	Load Height	Load Center	
	Dim. A	Dim. B	Dim. C
2720 kg (6000 lb)	4760mm (187.6 in)	610 mm (24 in)	610 mm (24 in)
2310 kg	4070 mm	610 mm	610 mm

