

CONDITION REPORT - ELECTRIC

Manufacturer	Model	Year	Serial Number
YALE MANUFACTURER	OS030BF	2017	E826N04354R

Mast	3 Stage FFL (Triplex)	Hours	N/A
Mast Height Lowered		Voltage	36 Volt
Mast Height Raised	213	Attachment	
Hydraulic Control Valve		Directional Control	Lever
Capacity	3000	Tires	Cushion

Mast Condition		Steering Pump Condition	
Mast Comments		Steering Pump Comments	
Lift Cylinder Condition		Hydraulic Pump Condition	
Lift Cylinder Comments		Hydraulic Pump Comments	
Tilt Cylinder Condition		Hydraulic Motor Condition	
Tilt Cylinder Comments		Hydraulic Motor Comments	
Carriage Condition		Control System Condition	
Carriage Comments		Control System Comments	
Load Backrest Condition		Drive Motor Condition	
Load Backrest Comments		Drive Motor Comments	
Forks Condition		Differential Condition	
Forks Comments		Differential Comments	
Overhead Guard Condition		Drive Tires % Remaining	60
Overhead Guard Comments		Drive Tires Condition	
Seat Condition		Steer Tires % Remaining	
Seat Comments		Steer Tires Condition	
General Appearance Condition	Fair	Steer Axle Condition	
General Appearance Comments		Steer Axle Comments	
		Brakes Condition	
		Brakes Comments	

General Comments

Needs operator lights and fans replaced/ Needs front cover replaced

Battery Present	Yes
Charger Present	No
Electrical Condition	Dead / low battery
Electrical Comments	

Inspector Company Name	PAPE	Inspection Date	7/19/2023 8:00:00 PM
Inspector Name	ecarnes		

(* Legend: =Checked OK)





Yale Lift Truck Model
OS030BFN36TE055

Attachment: 1016 mm (40 in) Wide X 698 mm (27.5 in) Deep Op Platform + 1067 mm (42 in) Forks

Type E 36 Volts Max A.H. (B.H. R) 1020
Truck Weight
Less Battery 2019 kg (4452 lb)
Max Battery 2881 kg (6352 lb)
Min Battery Wt. 726 kg (1600 lb)
Max Battery Wt. 862 kg (1900 lb)
Base Width 1041 mm (41 in)
Wheelbase 1447 mm (57 in)

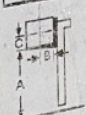
Trained Operators and Mechanics Only
Read Operating Manual located on the Unit Cover.

WARNING

Failure to follow operating, inspection, and maintenance instructions can cause serious injury or death.

CAPACITY WITH MAST VERTICAL AND EQUIPPED AS SHOWN

MAXIMUM CAPACITY	1360 kg (3000 lb)	kg (lb)
Load Height Dim. A	5410 mm (213 in)	mm (in)
Load Center Dim. B	610 mm (24 in)	mm (in)
Load Center Dim. C	610 mm (24 in)	mm (in)



Serial Number
E826N04308R

45556

Yale

1.5 TON VISION
CLASS 1
SERIES 1000

TYPE B - 36" TIRE - 11000 LBS. CAP. (5000 KG. CAP.)
LIFT HEIGHT: 11'0" (3353 MM)
LIFT CAPACITY: 1500 KG (3307 LB)
MAX. HEIGHT: 20'4" (6212 MM)
MAX. BURNING: 10'4" (3153 MM)
MAX. BURNING: 10'4" (3153 MM)
MAX. BURNING: 10'4" (3153 MM)
MAX. BURNING: 10'4" (3153 MM)



Read Operating Instructions
on Every Lift

WARNING

Failure to follow operating instructions or
manufacturer's instructions can result in
injury or death.
**CAPACITY WITH HEIST VERTICAL
AND EQUIPPED AS SHOWN**

	1360 kg (3000 lb)	8 kg (17.6)
CAPACITY	1360 kg (3000 lb)	8 kg (17.6)
MAX. HEIGHT	20'4" (6212 mm)	0.25"
MAX. BURNING	10'4" (3153 mm)	0.25"
MAX. BURNING	10'4" (3153 mm)	0.25"
MAX. BURNING	10'4" (3153 mm)	0.25"
MAX. BURNING	10'4" (3153 mm)	0.25"



SEE INSTRUCTIONS
FOR OPERATING





