

CONDITION REPORT - ELECTRIC

Manufacturer	Model	Year	Serial Number
HYSTER COMPANY	E50XN	2014	A268N12383M

Mast		Hours	9961
Mast Height Lowered	83	Voltage	48 Volt
Mast Height Raised	189	Attachment	
Hydraulic Control Valve Capacity	3-Function	Directional Control	Monotrol
		Tires	

Mast Condition		Steering Pump Condition	
Mast Comments		Steering Pump Comments	
Lift Cylinder Condition		Hydraulic Pump Condition	
Lift Cylinder Comments		Hydraulic Pump Comments	
Tilt Cylinder Condition		Hydraulic Motor Condition	
Tilt Cylinder Comments		Hydraulic Motor Comments	
Carriage Condition		Control System Condition	
Carriage Comments		Control System Comments	
Load Backrest Condition		Drive Motor Condition	
Load Backrest Comments		Drive Motor Comments	
Forks Condition		Differential Condition	
Forks Comments		Differential Comments	
Overhead Guard Condition		Drive Tires % Remaining	60
Overhead Guard Comments		Drive Tires Condition	
Seat Condition	Damaged	Steer Tires % Remaining	60
Seat Comments	BOTTOM SEAT CUSHION	Steer Tires Condition	
General Appearance Condition		Steer Axle Condition	
General Appearance Comments		Steer Axle Comments	
General Comments		Brakes Condition	
		Brakes Comments	
		Battery Present	Yes
		Charger Present	No
		Electrical Condition	
		Electrical Comments	

Inspector Company Name	PAPE MATERIAL HANDLING	Inspection Date	10/14/2019 1:33:45 PM
Inspector Name	Derick Guzman		

(* Legend: =Checked OK)

WARNING

Operators and Mechanics Only

Read Operating Manual located on seat or in operators compartment

to follow operating, repair, and maintenance instructions can cause injury or death!
CAPACITY WITH MAST VERTICAL AND EQUIPPED AS SHOWN



Lift Truck Model **E50XN-33**

Serial No. **A268N12383M**

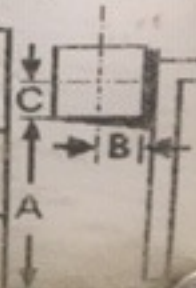
Attachment: 978 mm (39 in) SS Crg + 1067 mm (42 in) Forks

Truck Wt. Less Battery **3020 kg (6660 lb)** Type **E 48 Volts**
Truck Wt. Max Battery **4800 kg (10570 lb)** Max A.H.(6 Hr Rt) **1300**
Allowable Battery Wt. **1310 kg (2900 lb) to 1770 kg (3900 lb)**
Tread Width **890 mm (35.2 in)** Back Tilt **5 Degrees**

Tire Front
Size **21X7X15 Cushion**
Pressure ---

Rear
16X5X10.5 Cushion

MAXIMUM CAPACITY	Load Height Dim. A	Load Center	
		Dim. B	Dim. C
2110 kg (4650 lb)	4800mm (189 in)	610 mm (24 in)	610 mm (24 in)
2180 kg (4800 lb)	4350 mm (171.3 in)	610 mm (24 in)	610 mm (24 in)



12383M





