

CONDITION REPORT - ELECTRIC

Manufacturer	Model	Year	Serial Number
YALE MANUFACTURER	ERC060VG	2018	A968N18729S

Mast	4 Stage (Quad)	Hours	N/a Inspected
Mast Height Lowered	98	Voltage	48 Volt
Mast Height Raised	294	Attachment	Side Shifter
Hydraulic Control Valve	3-Function	Directional Control	Lever
Capacity	6000	Tires	Cushion

Mast Condition	Inspected	Steering Pump Condition	Inspected
Mast Comments		Steering Pump Comments	
Lift Cylinder Condition	Inspected	Hydraulic Pump Condition	Inspected
Lift Cylinder Comments		Hydraulic Pump Comments	
Tilt Cylinder Condition	Inspected	Hydraulic Motor Condition	
Tilt Cylinder Comments		Hydraulic Motor Comments	
Carriage Condition	Inspected	Control System Condition	Inspected
Carriage Comments		Control System Comments	
Load Backrest Condition	Inspected	Drive Motor Condition	Inspected
Load Backrest Comments		Drive Motor Comments	
Forks Condition	Inspected	Differential Condition	Inspected
Forks Comments		Differential Comments	
Overhead Guard Condition		Drive Tires % Remaining	90
Overhead Guard Comments		Drive Tires Condition	Inspected
Seat Condition	Inspected	Steer Tires % Remaining	80
Seat Comments		Steer Tires Condition	Inspected
General Appearance Condition	Fair	Steer Axle Condition	
General Appearance Comments		Steer Axle Comments	
		Brakes Condition	
		Brakes Comments	

General Comments

Needs both rear light Clusters and work light replaced.

Battery Present	Yes
Charger Present	No
Electrical Condition	Dead / low battery
Electrical Comments	Wire harness cut

Inspector Company Name	PAPE	Inspection Date	7/19/2023 8:00:00 PM
Inspector Name	ecarnes		

(* Legend: =Checked OK)
 Inspected

PLT 1

Model ER000VGN48TQ102
Number A968N18729S

WARNING

Trained Operators and
Mechanics Only



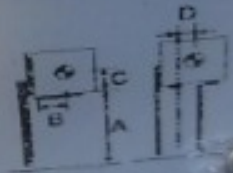
Read Operator's Manual located
on or near seat.
Failure to follow operating, inspection
and maintenance instructions can
cause serious injury or death.

Attachment 97
(60 in) Forks

(38.5 in) SS Crg + 1520 mm

Truck Weight Less Battery 3880 kg (8540 lb)
Truck Weight Max Battery 5650 kg (12440 lb)
Allowable Battery Weight 1320 kg (2900 lb) to 1770 kg (3900 lb)
Tread Width 1040 mm (40.9 in)
Back Tilt 4.0 Degrees
Tire Size 21x8x15 Cushion
Rear 16x6x10 5 Cushion
Type EO 48 Volts
Max A.H. 1300

MAXIMUM CAPACITY	Load Height		Load Center		Dim. D
	Dim. A	Dim. B	Dim. C	Dim. D	
1300 kg (2850 lb)	7400 mm (294 in)	610 mm (24 in)	610 mm (24 in)	102 mm (4.0 in)	
2120 kg (4650 lb)	6100 mm (240 in)	610 mm (24 in)	610 mm (24 in)		



524130228 4





