

CONDITION REPORT - INTERNAL COMBUSTION

Manufacturer	Model	Year	Serial Number	Corrected
HYSTER COMPANY	H190HD2	2014	K007E02162M	K007E02162M

Mast	2 Stage FFL (Duplex)	Hours	9224
Mast Height Lowered		Fuel	Diesel
Mast Height Raised	212	Attachment	
Hydraulic Control Valve Capacity	4-Function	Directional Control	Monotrol
		Tires	Pneumatic

Mast Condition		Engine	
Mast Comments		Engine Inspected Condition	
Lift Cylinder Condition		Engine Inspected Comments	
Lift Cylinder Comments		Radiator Condition	
Tilt Cylinder Condition		Radiator Comments	
Tilt Cylinder Comments		Transmission/MDU Condition	
Carriage Condition		Transmission/MDU Comments	
Carriage Comments			
Load Backrest Condition	Not applicable	Steering Pump Condition	Not applicable
Load Backrest Comments		Steering Pump Comments	
Forks Condition	Not applicable	Hydraulic Pump Condition	
Forks Comments		Hydraulic Pump Comments	
		Hydraulic Motor Condition	Not applicable
Overhead Guard Condition		Hydraulic Motor Comments	
Overhead Guard Comments		Control System Condition	Not applicable
		Control System Comments	
Seat Condition			
Seat Comments		Differential Condition	
		Differential Comments	
General Appearance Condition	Good	Drive Tires % Remaining	
General Appearance Comments		Drive Tires Condition	
		Steer Tires % Remaining	
General Comments		Steer Tires Condition	
		Steer Axle Condition	
		Steer Axle Comments	
		Brakes Condition	Excessive stopping distance
		Brakes Comments	
		Electrical Condition	
		Electrical Comments	

Inspector Company Name	Pape Material Handling	Inspection Date	3/7/2019 2:45:48 PM
Inspector Name	Jeremy Giles		

(* Legend: =Checked OK)



HYSTER
190
F69

HYSTER

Dr. Beer

PERFORMANCE
COMET 729

PERFORMANCE
COMET 729





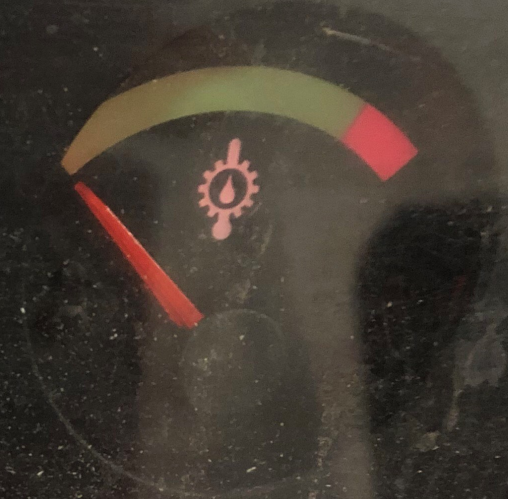
ETE



Lift Truck Model H190HD2
Serial No. K007E02162M

COMPLETE





09224

