

CONDITION REPORT - INTERNAL COMBUSTION

Manufacturer	Model	Year	Serial Number	Corrected
HYSTER COMPANY	E40XN	2017	A269N03361R	A269N03361R

Mast	3 Stage FFL (Triplex)	Hours	13962
Mast Height Lowered	82	Fuel	Electric
Mast Height Raised	187	Attachment	Carton Clamp
Hydraulic Control Valve	4-Function	Directional Control	Monotrol
Capacity	4000	Tires	Cushion

Mast Condition	Needs shim	Engine	
Mast Comments	Shims out of adjustment	Engine Inspected Condition	
Lift Cylinder Condition		Engine Inspected Comments	
Lift Cylinder Comments		Radiator Condition	
Tilt Cylinder Condition		Radiator Comments	
Tilt Cylinder Comments		Transmission/MDU Condition	
Carriage Condition		Transmission/MDU Comments	
Carriage Comments			
Load Backrest Condition		Steering Pump Condition	
Load Backrest Comments		Steering Pump Comments	
Forks Condition		Hydraulic Pump Condition	
Forks Comments		Hydraulic Pump Comments	
		Hydraulic Motor Condition	
Overhead Guard Condition	Damaged	Hydraulic Motor Comments	
Overhead Guard Comments	Impact damage RR leg	Control System Condition	
		Control System Comments	

Seat Condition		Differential Condition	
Seat Comments		Differential Comments	
General Appearance Condition	Fair	Drive Tires % Remaining	
General Appearance Comments	Impact damage	Drive Tires Condition	Chunked
		Steer Tires % Remaining	65%

General Comments

play in trunion, play in hydraulic valve linkage, fourth function plastic broken, main lift hose chaffed, mast rails sloppy shims, right hand header hoses chaffed, clamp bearings worn, battery dirty, brake fluid dirty, drive tires chunked, steer pins and bushings worn, two dings in rear OHG see pictures

Steer Tires Condition	
Steer Axle Condition	
Steer Axle Comments	
Brakes Condition	
Brakes Comments	
Electrical Condition	
Electrical Comments	

Inspector Company Name	Eastern Lift Truck	Inspection Date	2/6/2023 3:12:15 PM
Inspector Name	jpellini		

(* Legend: =Checked OK)

















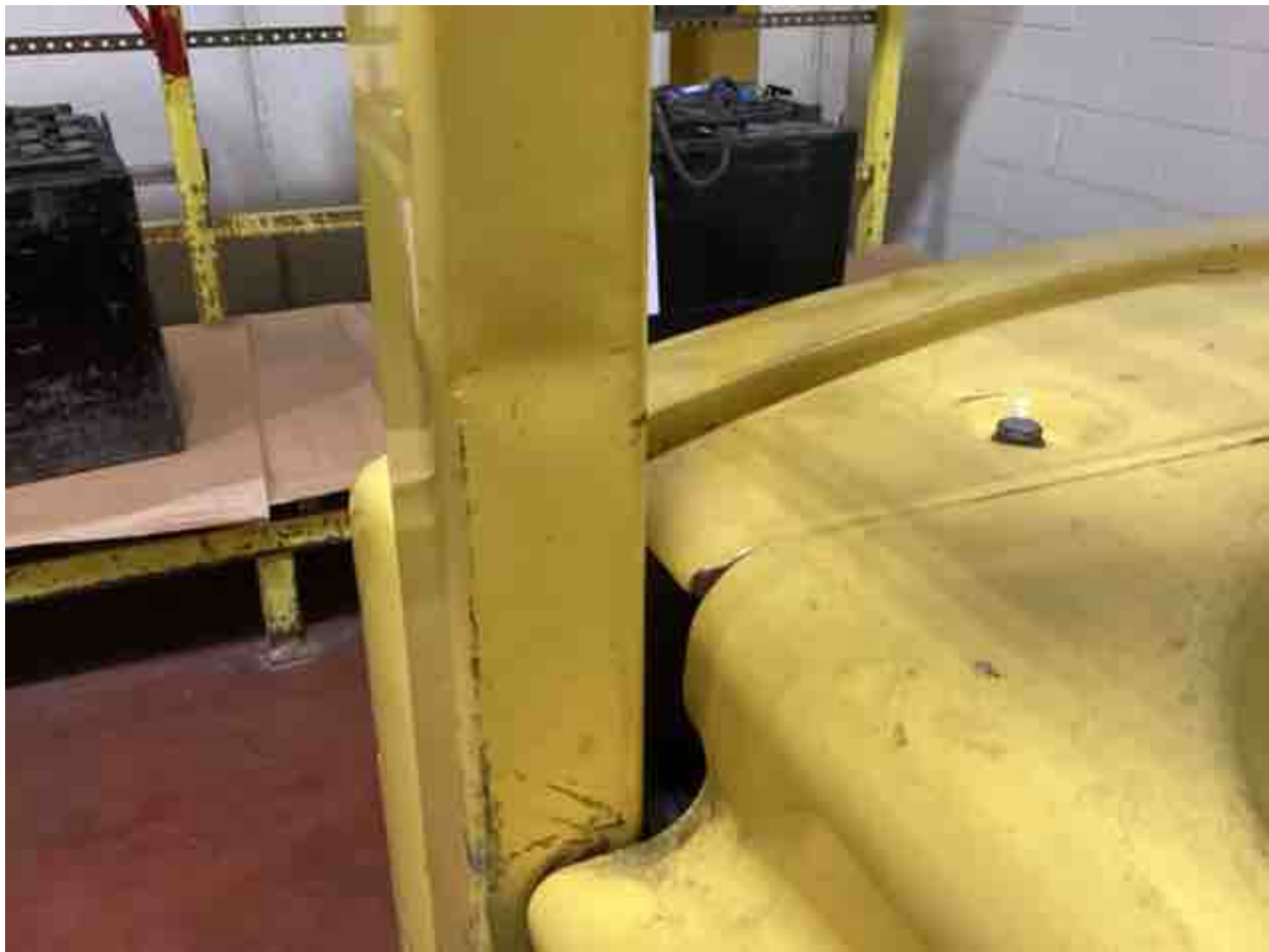














WARNING

Truck Operators and Mechanics Only
Load Capacity is based on
1000 kg or
2200 lbs
temperature
to follow operating
instructions and maintenance
instructions on page 22 of
capacity with mast
vertical and
equipped as shown

1.5 L35 Tractor Model E4011
Serial No. A2004022011
Approved by CECC (European Conformity) CECC
22030001500010000
Truck Wt. Load Capacity 2500 kg (5500 lb) Type 24-Valve
Truck Wt. Max. Duty 4400 kg (9700 lb) Max. A 2000 kg (4400 lb)
Alternative Duty Wt. 840 kg (1850 lb) 1520 kg (3350 lb)
Total Wt. 800 mm (31.5 in) Deck 70 S.S. Design
Tire Load Capacity 4000 kg (8800 lb)
4000 kg (8800 lb) 4000 kg (8800 lb)

MAXIMUM CAPACITY	Load Height Dim. A	Load Center	
		Dim. B	Dim. C
120 kg (265 lb)	475 mm (18.7 in)	875 mm (34.4 in)	975 mm (38.4 in)
1500 kg (3300 lb)	2000 mm (78.7 in)	875 mm (34.4 in)	975 mm (38.4 in)

