

CONDITION REPORT - ELECTRIC

Manufacturer	Model	Year	Serial Number
YALE	OS030BF	2019	E826N05025T

Mast		Hours	4322
Mast Height Lowered	10	Voltage	24 Volt
Mast Height Raised	25	Attachment	
Hydraulic Control Valve		Directional Control	
Capacity	2000	Tires	Non-Marking

Mast Condition		Steering Pump Condition	
Mast Comments		Steering Pump Comments	
Lift Cylinder Condition		Hydraulic Pump Condition	
Lift Cylinder Comments		Hydraulic Pump Comments	
Tilt Cylinder Condition		Hydraulic Motor Condition	
Tilt Cylinder Comments		Hydraulic Motor Comments	
Carriage Condition		Control System Condition	
Carriage Comments		Control System Comments	
Load Backrest Condition		Drive Motor Condition	
Load Backrest Comments		Drive Motor Comments	
Forks Condition		Differential Condition	
Forks Comments		Differential Comments	
Overhead Guard Condition		Drive Tires % Remaining	45
Overhead Guard Comments		Drive Tires Condition	Chunked
Seat Condition		Steer Tires % Remaining	
Seat Comments		Steer Tires Condition	Not-Selected
General Appearance Condition	Good	Steer Axle Condition	
General Appearance Comments		Steer Axle Comments	
		Brakes Condition	
		Brakes Comments	

General Comments

operator cage damaged platform gate arms are damaged drive unit cover damaged and missing hardware drive tire needs replace

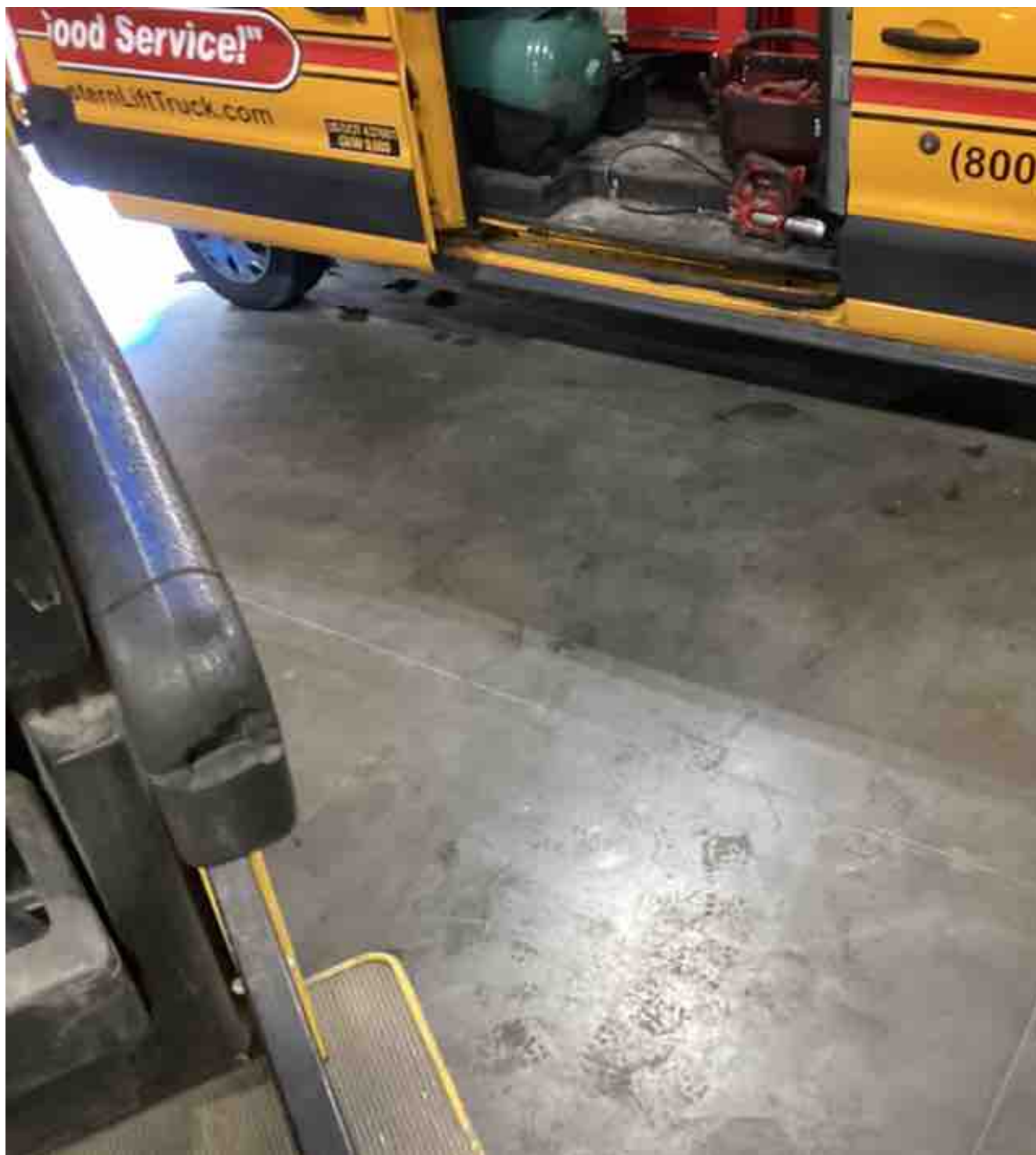
Battery Present	Yes
Charger Present	Yes
Electrical Condition	
Electrical Comments	

Inspector Company Name	eastern lift truck	Inspection Date	3/27/2023 9:09:51 PM
Inspector Name	Tjcolvin		

(* Legend: =Checked OK)

















Fork
 Type E With 24 Max 4 1/2 (4 M) 1200
 Truck Weight Less Battery 3540 kg (7800 lb)
 Truck Weight Max Battery 3400 kg (7500 lb)
 Min Battery Wt 720 kg (1580 lb)
 Max Battery Wt 860 kg (1880 lb)
 Base Width 1220 mm
 Wheel Base 1440 mm

Trained Operator
Mechanics



CAPACITY WEIGHT AND EQUIPMENT

MAXIMUM CAPACITY	1900	(2000)
Load Height Dim. A	762	(30)
Load Height Dim. B	610	(24)
Load Height Dim. C	610	(24 in) (24 in)

NOTICE TO USER

The U.S.A. Occupational Safety and Health Act of 1970 and other national safety codes require a new plate if this unit is equipped other than stated on plate. Obtain the correct plate from your authorized dealer.

To remove pull here

Serial Number: ER26N05025T





