

# CONDITION REPORT - ELECTRIC

Manufacturer	Model	Year	Serial Number	Corrected
YALE MANUFACTURER	MPE060	2014	C896N02180M	C896N02180M

Mast	6 Lift Pallet	Hours	1265
Mast Height Lowered		Voltage	24 Volt
Mast Height Raised		Attachment	
Hydraulic Control Valve		Directional Control	
Capacity	6000	Tires	

Mast Condition	Not applicable	Steering Pump Condition	
Mast Comments		Steering Pump Comments	
Lift Cylinder Condition	Not applicable	Hydraulic Pump Condition	
Lift Cylinder Comments		Hydraulic Pump Comments	
Tilt Cylinder Condition	Not applicable	Hydraulic Motor Condition	
Tilt Cylinder Comments		Hydraulic Motor Comments	
Carriage Condition	Not applicable	Control System Condition	Not applicable
Carriage Comments		Control System Comments	
Load Backrest Condition	Not applicable	Drive Motor Condition	
Load Backrest Comments		Drive Motor Comments	
Forks Condition		Differential Condition	
Forks Comments		Differential Comments	
Overhead Guard Condition	Not applicable	Drive Tires % Remaining	
Overhead Guard Comments		Drive Tires Condition	
Seat Condition	Not applicable	Steer Tires % Remaining	
Seat Comments		Steer Tires Condition	Not-Selected
		Steer Axle Condition	Not applicable
General Appearance Condition	Good	Steer Axle Comments	
General Appearance Comments		Brakes Condition	Not applicable
		Brakes Comments	
General Comments		Battery Present	Yes
		Charger Present	
		Electrical Condition	
		Electrical Comments	

Inspector Company Name	Briggs Equipment	Inspection Date	10/14/2019 4:49:33 PM
Inspector Name	Nicole Griffin		

(\* Legend: =Checked OK)

**Yale**

Lift Truck Model MPE060LFN24T2748

Serial Number C896N02180M

Battery Type E 24 Volts Max Add 500 kg (1100 lb)

Truck Weight Less Battery 549 kg (1210 lb)

Truck Weight Max Battery 1,048 kg (2,310 lb)

Minimum Battery Weight 227 kg (500 lb)

Maximum Battery Weight 499 kg (1100 lb)

**MAXIMUM CAPACITY 2,721 kg (6000 lb)**



As to fire and electric shock hazards only.

Type E industrial truck

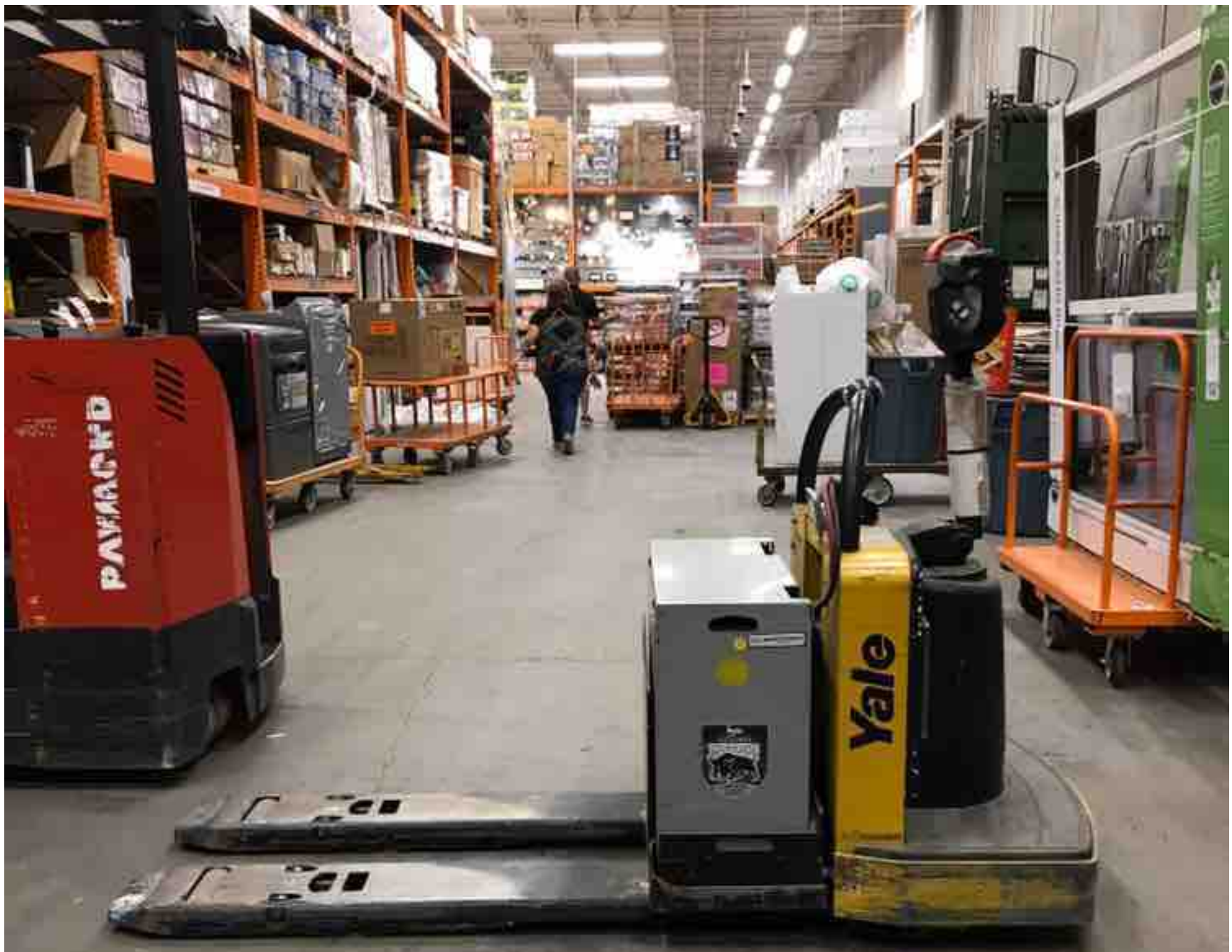
No. 162G

IMPORTANT

12418501



Hours 1265









End

