

**CONDITION REPORT - ELECTRIC**

<b>Manufacturer</b>	<b>Model</b>	<b>Year</b>	<b>Serial Number</b>
YALE	OS030BF	2019	E826N05047T

Mast		Hours	4623
Mast Height Lowered	10	Voltage	24 Volt
Mast Height Raised	25	Attachment	
Hydraulic Control Valve		Directional Control	
Capacity	2000	Tires	Non-Marking

Mast Condition		Steering Pump Condition	
Mast Comments		Steering Pump Comments	
Lift Cylinder Condition		Hydraulic Pump Condition	
Lift Cylinder Comments		Hydraulic Pump Comments	
Tilt Cylinder Condition		Hydraulic Motor Condition	
Tilt Cylinder Comments		Hydraulic Motor Comments	
Carriage Condition		Control System Condition	
Carriage Comments		Control System Comments	
Load Backrest Condition		Drive Motor Condition	
Load Backrest Comments		Drive Motor Comments	
Forks Condition		Differential Condition	
Forks Comments		Differential Comments	
Overhead Guard Condition		Drive Tires % Remaining	80
Overhead Guard Comments		Drive Tires Condition	
Seat Condition		Steer Tires % Remaining	
Seat Comments		Steer Tires Condition	Not-Selected
General Appearance Condition	Good	Steer Axle Condition	
General Appearance Comments		Steer Axle Comments	
		Brakes Condition	
		Brakes Comments	

General Comments

operator screen damaged operator gate arms damaged drive unit cover missing hardware drive unit doors missing hardware

Battery Present	Yes
Charger Present	Yes
Electrical Condition	
Electrical Comments	

Inspector Company Name	eastern lift truck	Inspection Date	3/27/2023 8:36:30 PM
Inspector Name	Tjcolvin		

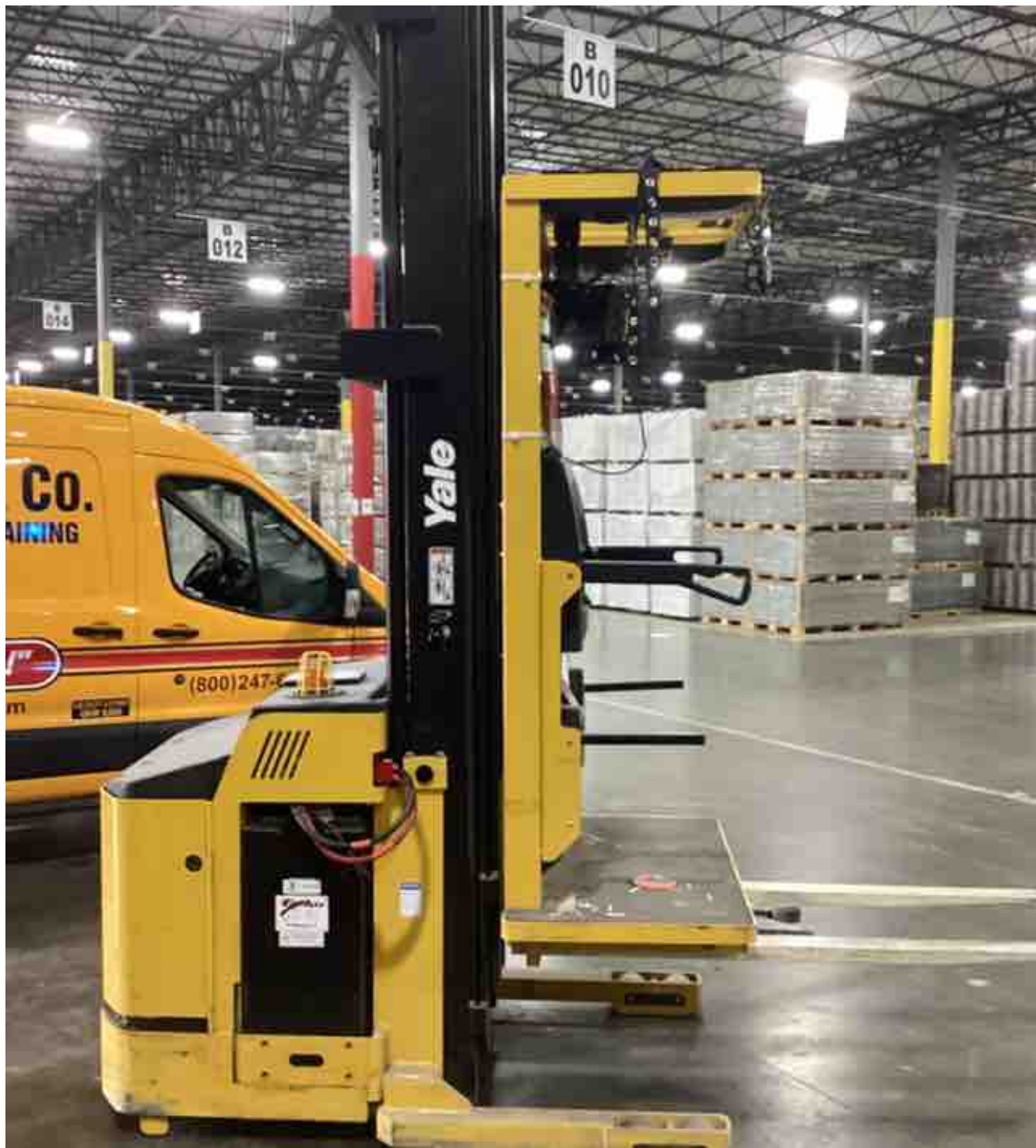
(\* Legend: =Checked OK)



















Attachment: 1219 mm (48 in) Wide X 693 mm (27.3 in) Deep Op Platform + 1067 mm (42 in) Forks

Type: E Volts: 24 Max A.H. (6 Hr Rt) 1240  
Truck Weight Less Battery 2650 kg (5830 lb)  
Truck Weight Max Battery 3420 kg (7530 lb)  
Min Battery Wt. 720 kg (1600 lb)  
Max Battery Wt. 880 kg (1920 lb)  
Base Width 1220 mm  
Wheel Base 1440 mm

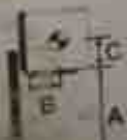
**Trained  
Mechanics  
Required  
Local**



Follow to follow  
maintenance  
serious  
**CAPACITY W  
AND EQU**

<b>MAXIMUM CAPACITY</b>	1335	1335
Load Height Dim. A	762 mm (30 in)	762 mm (30 in)
Load Height Dim. B	610 mm (24 in)	610 mm (24 in)
Load Height Dim. C	610 mm (24 in)	610 mm (24 in)

Serial Number: E826N05047T



1335137 06

**NOTICE TO USER**  
The U.S.A. Occupational Safety and Health Act of 1970 and other national safety codes require a new plate if this unit is equipped other than stated on plate. Obtain the correct plate from your authorized dealer.



















