

CONDITION REPORT - ELECTRIC

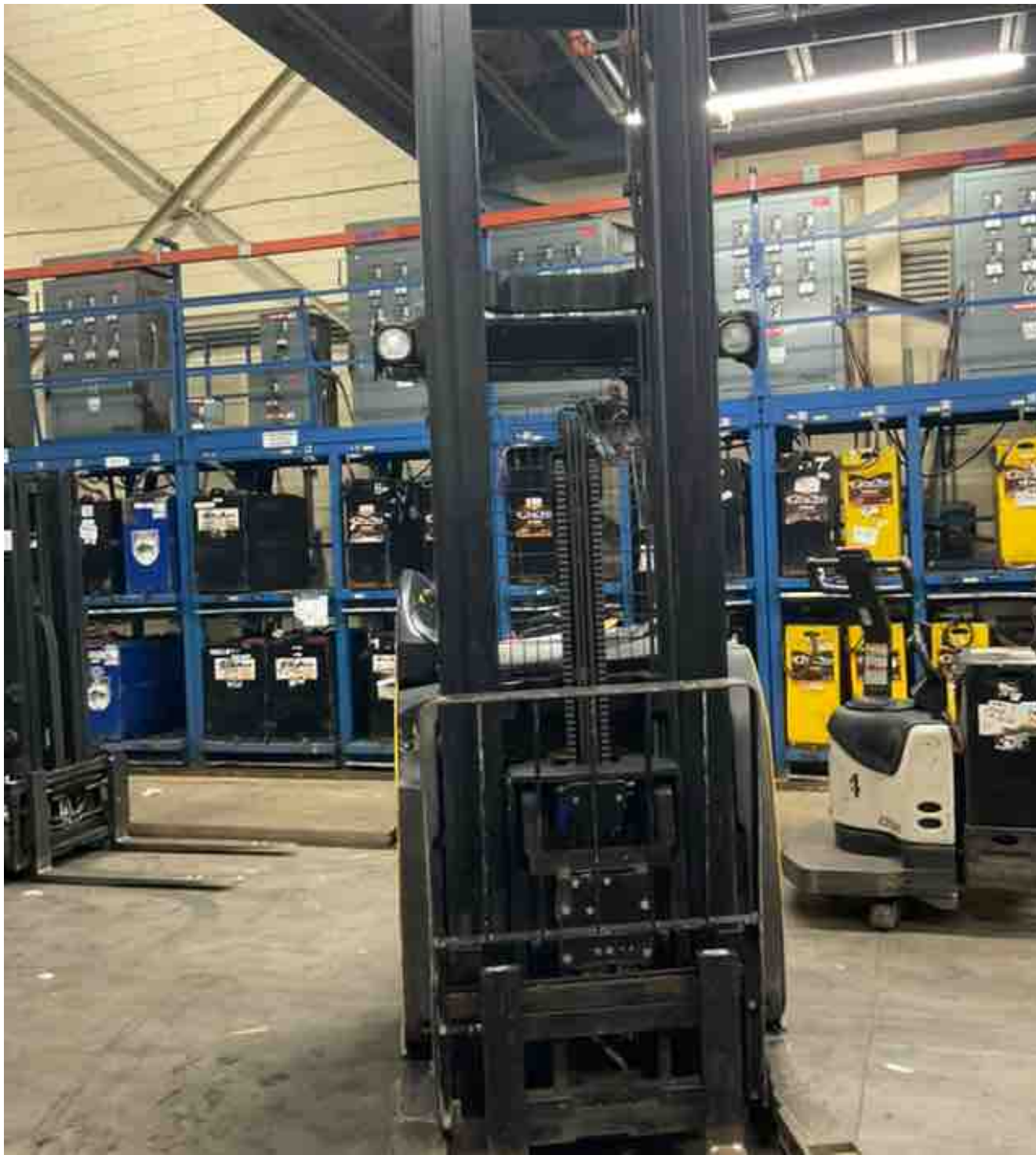
| | | | |
|--------------------------|----------------|-------------|----------------------|
| Manufacturer | Model | Year | Serial Number |
| YALE MANUFACTURER | NR045EB | 2018 | D861N05213S |

| | | | |
|-------------------------|-----------------------|---------------------|---------|
| Mast | 3 Stage FFL (Triplex) | Hours | 8338 |
| Mast Height Lowered | 131 | Voltage | 36 Volt |
| Mast Height Raised | 302 | Attachment | |
| Hydraulic Control Valve | 3-Function | Directional Control | Lever |
| Capacity | 4500 | Tires | Cushion |

| | | | |
|------------------------------|-----------|---------------------------|--------------|
| Mast Condition | Inspected | Steering Pump Condition | Inspected |
| Mast Comments | | Steering Pump Comments | |
| Lift Cylinder Condition | Inspected | Hydraulic Pump Condition | Inspected |
| Lift Cylinder Comments | | Hydraulic Pump Comments | |
| Tilt Cylinder Condition | Inspected | Hydraulic Motor Condition | Inspected |
| Tilt Cylinder Comments | | Hydraulic Motor Comments | |
| Carriage Condition | Inspected | Control System Condition | Inspected |
| Carriage Comments | | Control System Comments | |
| Load Backrest Condition | Inspected | Drive Motor Condition | Inspected |
| Load Backrest Comments | | Drive Motor Comments | |
| Forks Condition | Inspected | Differential Condition | |
| Forks Comments | | Differential Comments | |
| Overhead Guard Condition | Inspected | Drive Tires % Remaining | 50 |
| Overhead Guard Comments | | Drive Tires Condition | Inspected |
| Seat Condition | | Steer Tires % Remaining | |
| Seat Comments | | Steer Tires Condition | Not-Selected |
| General Appearance Condition | Inspected | Steer Axle Condition | Inspected |
| General Appearance Comments | | Steer Axle Comments | |
| General Comments | | Brakes Condition | Inspected |
| | | Brakes Comments | |
| | | Battery Present | Yes |
| | | Charger Present | Yes |
| | | Electrical Condition | Inspected |
| | | Electrical Comments | |

| | | |
|------------------------|-----------------|----------------------|
| Inspector Company Name | Inspection Date | 7/5/2023 10:20:09 AM |
| Inspector Name | jlew | |

(* Legend: =Checked OK)
 Inspected



AR / MODELO DE SLAB



RSH105861

INDUSTRIAL BATTERIES S.A. UNO DE OCHO S.A. RAYO D'ORIONE S.A. RT1200

| | Reading |
|--|----------------------------|
| TIPO / TYPE | E125D-13 |
| TY / CAPACIDAD / CAPACITE | 750 Ah @ C ₂₀ |
| ING RATE / EN DE CARGA FINAL / LA CHARGE | MIN. 30.0 A MAX. 37.5 A |
| SPECIFIC GRAVITY / GRAVEDAD ESPECIFICA / DENSITE | 1.280 |

RECHARGEZ SANS CHARGES / RECHARGEZ SANS CHARGES

RECHARGEZ SANS CHARGES / RECHARGEZ SANS CHARGES

RECHARGEZ SANS CHARGES / RECHARGEZ SANS CHARGES





52

ACPOWER

0.0mph 2
8338H

1

2

4

3

Yale 
iSi Technology

