

CONDITION REPORT - ELECTRIC

Manufacturer	Model	Year	Serial Number
YALE	MPE060-VG	2019	E896N01703T

Mast	Hours	237
Mast Height Lowered	Voltage	24 Volt
Mast Height Raised	Attachment	
Hydraulic Control Valve	Directional Control	Lever
Capacity	6000	Tires

Mast Condition	Inspected	Steering Pump Condition	Not applicable
Mast Comments		Steering Pump Comments	
Lift Cylinder Condition	Inspected	Hydraulic Pump Condition	Inspected
Lift Cylinder Comments		Hydraulic Pump Comments	
Tilt Cylinder Condition	Not applicable	Hydraulic Motor Condition	Inspected
Tilt Cylinder Comments		Hydraulic Motor Comments	
Carriage Condition	Not applicable	Control System Condition	Inspected
Carriage Comments		Control System Comments	
Load Backrest Condition	Inspected	Drive Motor Condition	Inspected
Load Backrest Comments		Drive Motor Comments	
Forks Condition	Inspected	Differential Condition	Inspected
Forks Comments		Differential Comments	
Overhead Guard Condition	Not applicable	Drive Tires % Remaining	80
Overhead Guard Comments		Drive Tires Condition	Inspected
Seat Condition	Not applicable	Steer Tires % Remaining	
Seat Comments		Steer Tires Condition	
General Appearance Condition		Steer Axle Condition	
General Appearance Comments		Steer Axle Comments	
		Brakes Condition	Inspected
		Brakes Comments	

General Comments

Battery Present	
Charger Present	
Electrical Condition	Inspected
Electrical Comments	

Inspector Company Name	Pape	Inspection Date	11/9/2023 1:10:33 PM
Inspector Name	rfranco		

(* Legend: =Checked OK)
 Inspected

G

ors and
Only

Operating
located behind
unit cover on
Frame Weldment

ow op rating,
d maintenance
an cause serious
or death!

Y WITH TRUCK
ED AS SHOWN

Yale

Model MPE060LGN24T2748
Serial Number E896N01703T

Battery Type E 24 Volts

Max A.H. 930

Truck Weight Less Battery 550 kg (1210 lbs)
Truck Weight Max Battery 1230 kg (2710 lbs)
Minimum Battery Weight 227 kg (510 lbs)
Maximum Battery Weight 680 kg (1500 lbs)

MAXIMUM CAPACITY 2720 kg (6000 lbs)
As to fire and electric shock hazards only



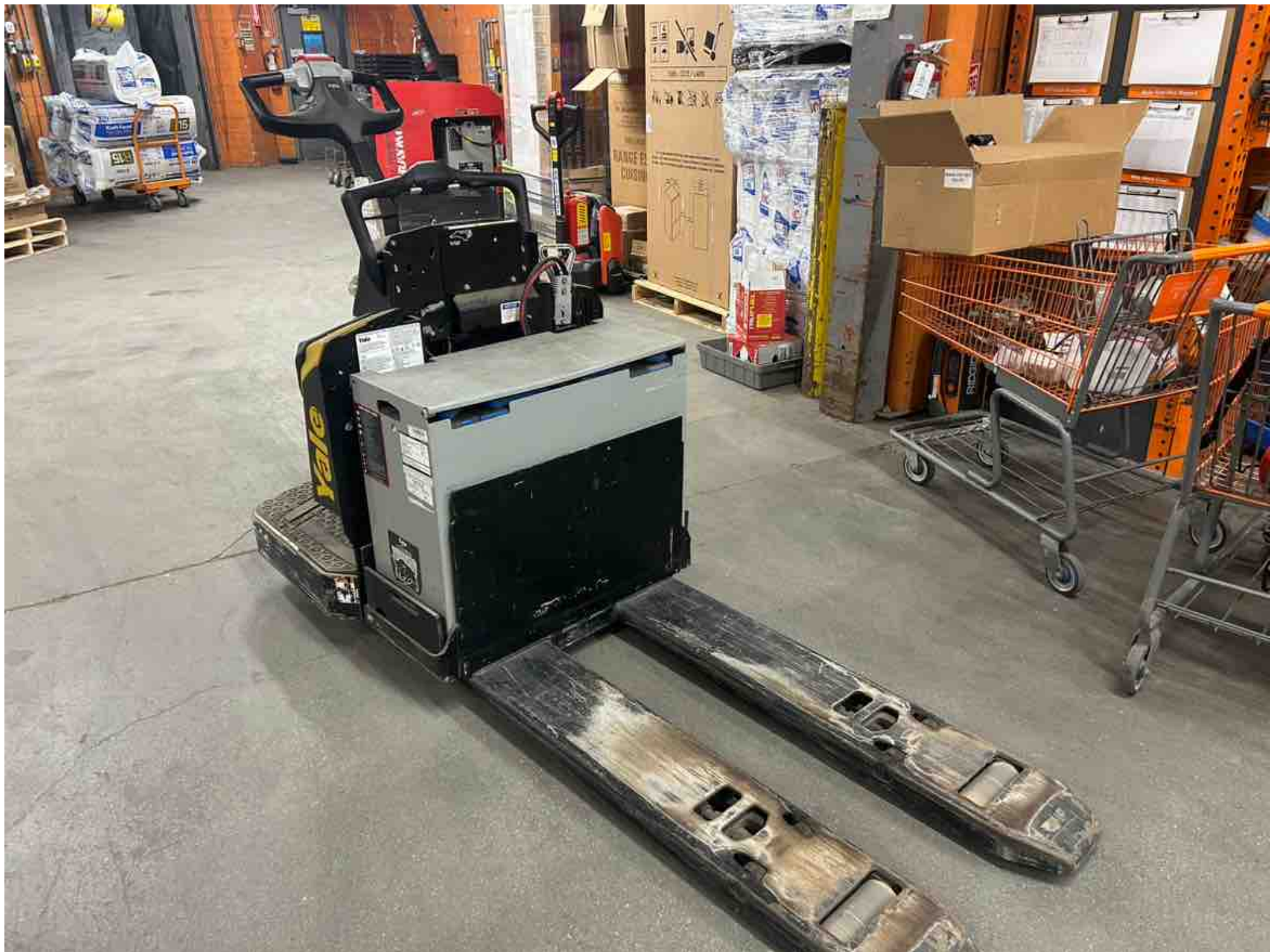
As to fire and electric shock hazards only
Type E Industrial Truck
No. 1626

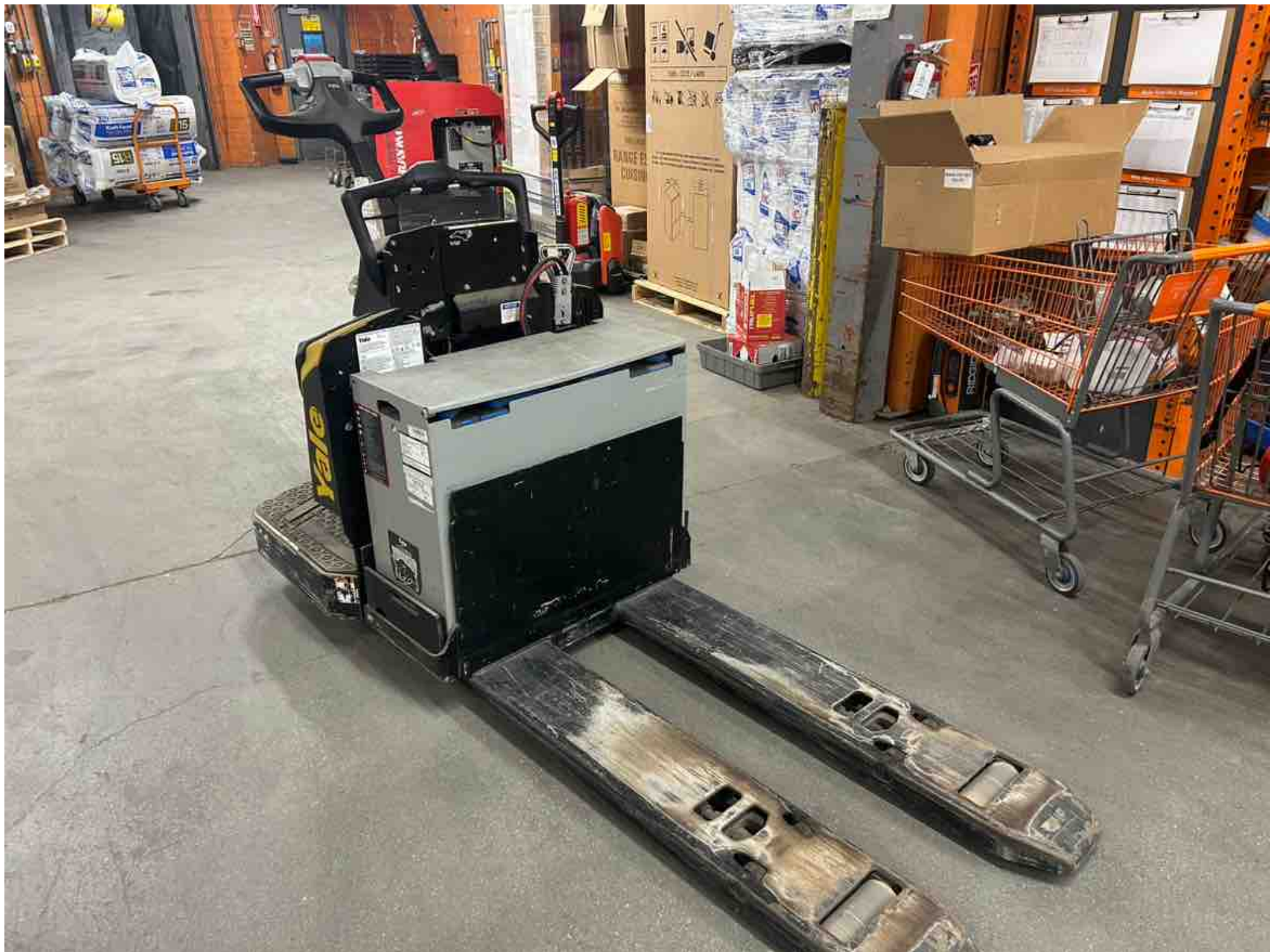
with DETAIL
location. Battery contains highly acid electrolyte and is certified for a 3-year life.





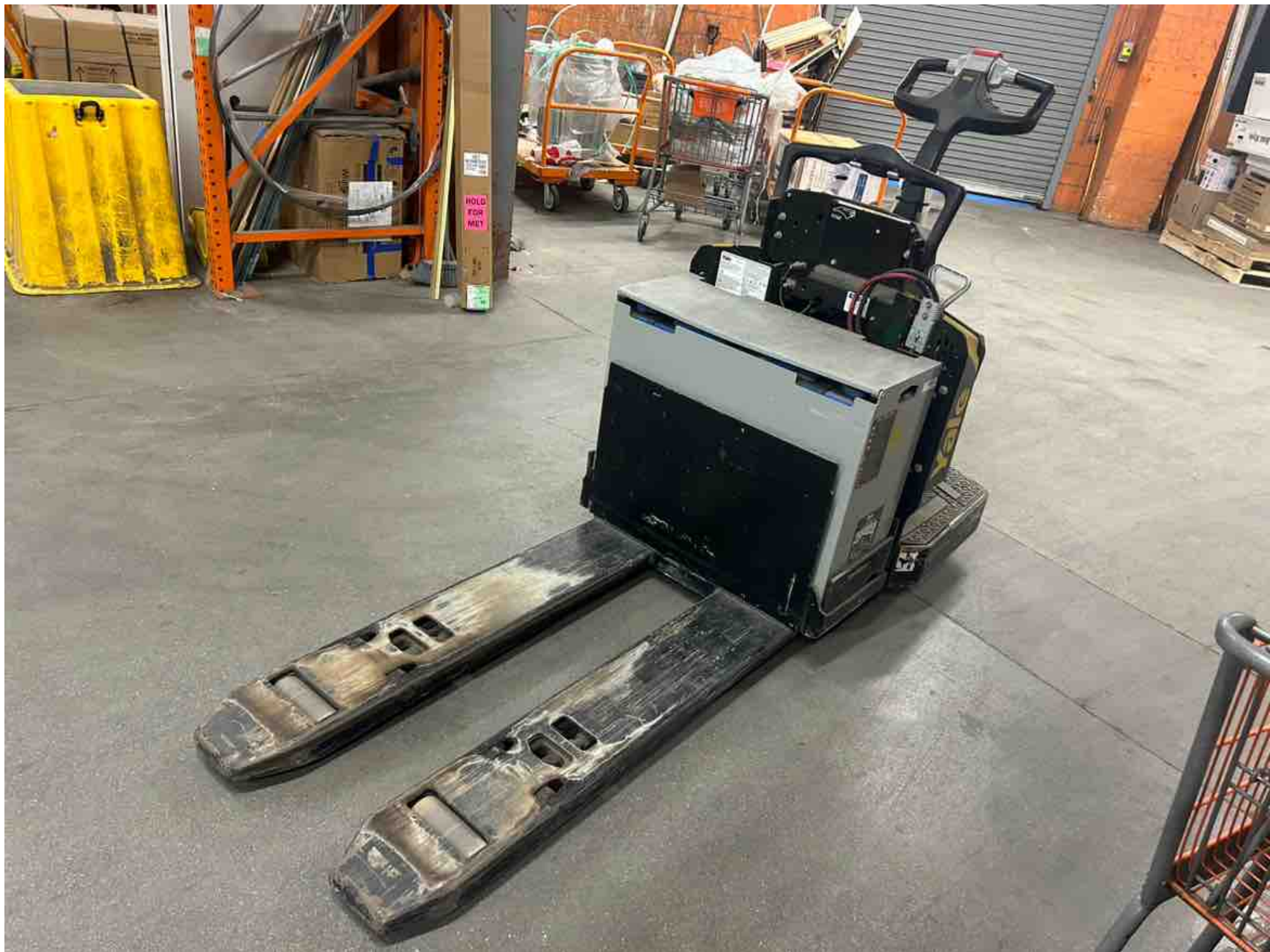












G

ors and
Only

Operating
located behind
unit cover on
Frame Weldment

ow op rating,
d maintenance
an cause serious
or death!

Y WITH TRUCK
ED AS SHOWN

Yale

Model MPE060LGN24T2748
Serial Number E896N01703T

Battery Type E 24 Volts

Max A.H. 930

Truck Weight Less Battery 550 kg (1210 lbs)
Truck Weight Max Battery 1230 kg (2710 lbs)
Minimum Battery Weight 227 kg (510 lbs)
Maximum Battery Weight 680 kg (1500 lbs)

MAXIMUM CAPACITY 2720 kg (6000 lbs)
As to fire and electric shock hazards only



As to fire and electric shock hazards only
Type E Industrial Truck
No. 1626

with DETAIL
location. Battery contains highly acid and is certified for a 3-year life



