

# CONDITION REPORT - ELECTRIC

<b>Manufacturer</b>	<b>Model</b>	<b>Year</b>	<b>Serial Number</b>
YALE MANUFACTURER	ERP030VT	2013	G807N04772L

Mast	3 Stage FFL (Triplex)	Hours	9029
Mast Height Lowered	82	Voltage	36 Volt
Mast Height Raised	187	Attachment	
Hydraulic Control Valve	3-Function	Directional Control	Lever
Capacity	3000	Tires	Solid Pneumatic

Mast Condition		Steering Pump Condition	
Mast Comments		Steering Pump Comments	
Lift Cylinder Condition		Hydraulic Pump Condition	
Lift Cylinder Comments		Hydraulic Pump Comments	
Tilt Cylinder Condition		Hydraulic Motor Condition	
Tilt Cylinder Comments		Hydraulic Motor Comments	
Carriage Condition		Control System Condition	
Carriage Comments		Control System Comments	
Load Backrest Condition		Drive Motor Condition	
Load Backrest Comments		Drive Motor Comments	
Forks Condition		Differential Condition	
Forks Comments		Differential Comments	
Overhead Guard Condition		Drive Tires % Remaining	40
Overhead Guard Comments		Drive Tires Condition	Chunked
Seat Condition	Damaged	Steer Tires % Remaining	20
Seat Comments	Torn	Steer Tires Condition	
General Appearance Condition	Fair	Steer Axle Condition	
General Appearance Comments		Steer Axle Comments	
General Comments		Brakes Condition	
		Brakes Comments	
		Battery Present	Yes
		Charger Present	No
		Electrical Condition	Dead / low battery
		Electrical Comments	

Rear Reflector Assemblies Missing  
Steering Wheel Spinner Knob Broken  
Operators Manual Missing

Inspector Company Name	Insley McEntee	Inspection Date	8/13/2019 8:26:02 AM
Inspector Name	Greg Owens		

(\* Legend: =Checked OK)







Yale

LIVELY MENTOR

LM5410





# Yale

Lift Truck Model **ERP030VTN36TE082**

Serial No. **G807N04772L**

Attachment: 978 mm (39 in) SS Crg + 1067 mm (42 in) Forks

Truck Wt. Less Battery **2370 kg (5220 lb)**      Type E **36 Volts**

Truck Wt. Max Battery **3510 kg (7720 lb)**      Max A.H.(6 Hr Rt) **880**

Allowable Battery Wt. **910 kg (2000 lb) to 1130 kg (2500 lb)**

Tread Width **880 mm (34.9 in)**      Back Tilt **5 Degrees**

Tire      Front

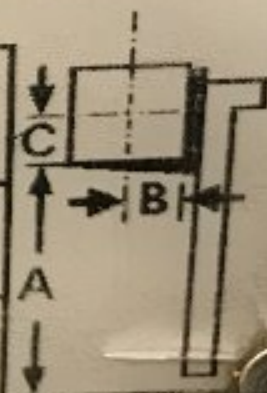
Rear

Size      **18X7-8 Solid**

**15X4.5-8/3.0 Dual Solid**

Pressure ---

MAXIMUM CAPACITY	Load Height Dim. A	Load Center	
		Dim. B	Dim. C
<b>1360 kg (3000 lb)</b>	<b>4750mm (187 in)</b>	<b>610 mm (24 in)</b>	<b>610 mm (24 in)</b>
kg ( lb)	mm ( in)	mm ( in)	mm ( in)



524136225 4