

CONDITION REPORT - INTERNAL COMBUSTION

Manufacturer	Model	Year	Serial Number
HYSTER COMPANY	S120FTPRS	2013	H004V01923L

Mast		Hours	13990
Mast Height Lowered	100	Fuel	LP Gas
Mast Height Raised	211	Attachment	Paper Roll Clamp
Hydraulic Control Valve	5-Function	Directional Control	Monotrol
Capacity	12000	Tires	Non-Marking

Mast Condition		Engine	
Mast Comments		Engine Inspected Condition	
Lift Cylinder Condition		Engine Inspected Comments	
Lift Cylinder Comments		Radiator Condition	
Tilt Cylinder Condition		Radiator Comments	
Tilt Cylinder Comments		Transmission/MDU Condition	
Carriage Condition		Transmission/MDU Comments	
Carriage Comments			
Load Backrest Condition	Not applicable	Steering Pump Condition	
Load Backrest Comments		Steering Pump Comments	
Forks Condition		Hydraulic Pump Condition	
Forks Comments		Hydraulic Pump Comments	
		Hydraulic Motor Condition	
Overhead Guard Condition		Hydraulic Motor Comments	
Overhead Guard Comments		Control System Condition	
		Control System Comments	

Seat Condition		Differential Condition	
Seat Comments		Differential Comments	
General Appearance Condition		Drive Tires % Remaining	60
General Appearance Comments		Drive Tires Condition	
		Steer Tires % Remaining	60
General Comments		Steer Tires Condition	
		Steer Axle Condition	
		Steer Axle Comments	
		Brakes Condition	
		Brakes Comments	
		Electrical Condition	
		Electrical Comments	

Inspector Company Name	Deep south equipment	Inspection Date	8/26/2019 8:57:09 AM
Inspector Name	Nicole Griffin		

(* Legend: =Checked OK)



Lift Truck Model **S120FTPRS**

Serial No. **H004V01923L**

Attachment: **1067 mm (42 in) Carriage + Paper roll clamp Cascade 90F-114261**

Truck Weight **9650 kg (21280 lb)**

Tread Width **1115 mm (43.9 in)**

Back Tilt **6.0 Degrees**

Tire

Front

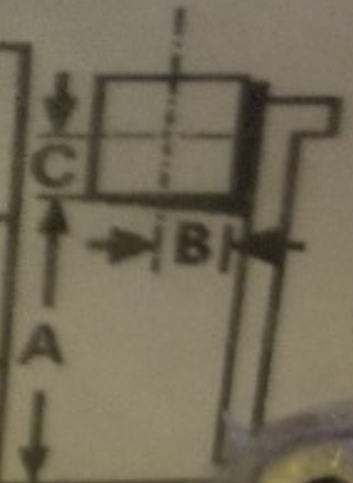
Rear

Size **22X12X16 Cushion**

18X8X12-1/8 Cushion

Pressure **—**

MAXIMUM CAPACITY	Load Height	Load Center	
	Dim. A	Dim. B	Dim. C
4090 kg (9000 lb)	5300mm (208.7 in)	770 mm (30 in)	770 mm (30 in)
0 kg (0 lb)	0 mm (0 in)	0 mm (0 in)	0 mm (0 in)



1381125 5









