

CONDITION REPORT - ELECTRIC

Manufacturer	Model	Year	Serial Number
YALE MANUFACTURER	NR045EB	2018	D861N05216S

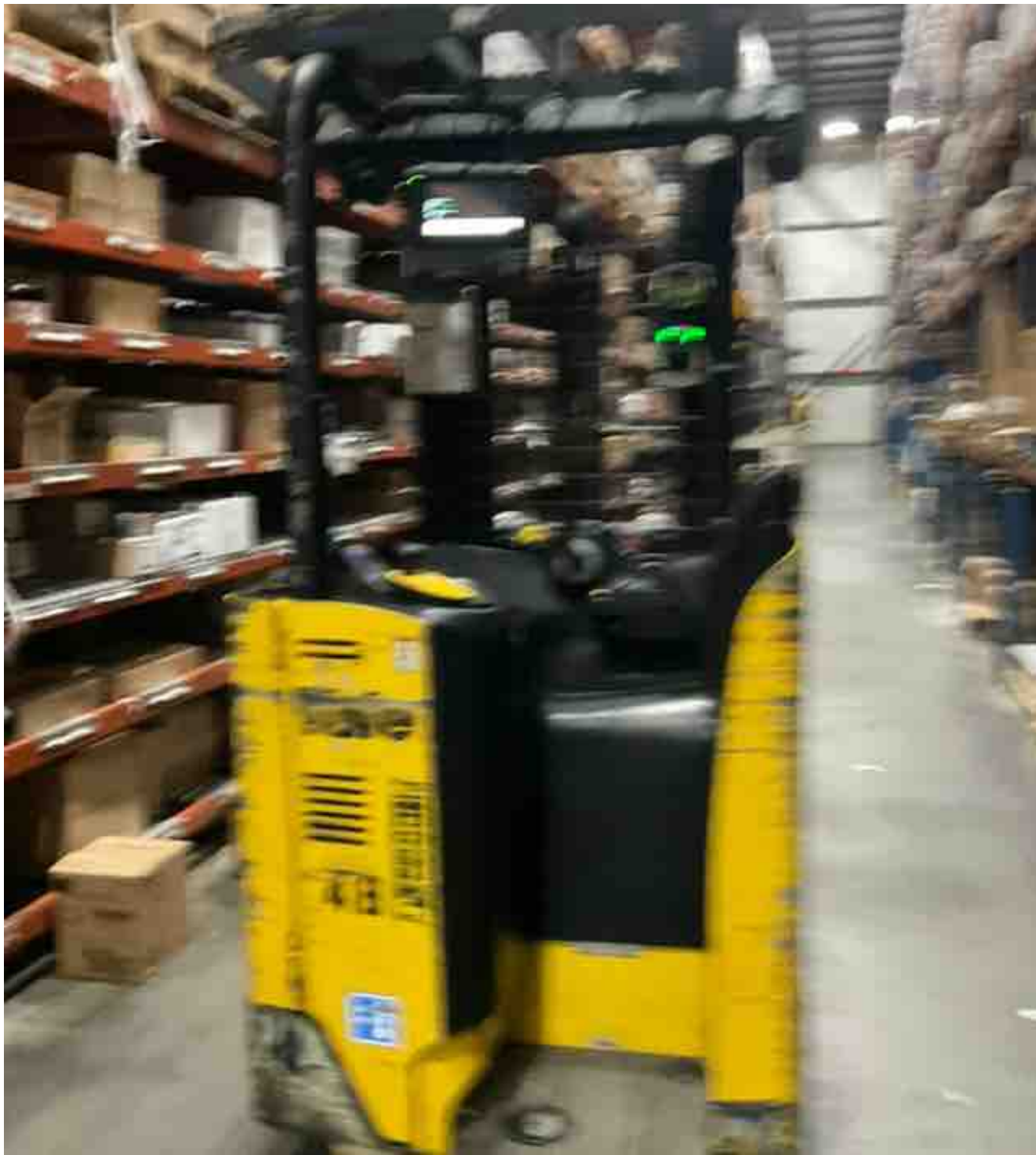
Mast	3 Stage FFL (Triplex)	Hours	6211
Mast Height Lowered	131	Voltage	36 Volt
Mast Height Raised	302	Attachment	
Hydraulic Control Valve	3-Function	Directional Control	Lever
Capacity	4500	Tires	Cushion

Mast Condition	Inspected	Steering Pump Condition	Inspected
Mast Comments		Steering Pump Comments	
Lift Cylinder Condition	Inspected	Hydraulic Pump Condition	Inspected
Lift Cylinder Comments		Hydraulic Pump Comments	
Tilt Cylinder Condition	Inspected	Hydraulic Motor Condition	Inspected
Tilt Cylinder Comments		Hydraulic Motor Comments	
Carriage Condition	Inspected	Control System Condition	Inspected
Carriage Comments		Control System Comments	
Load Backrest Condition	Inspected	Drive Motor Condition	Inspected
Load Backrest Comments		Drive Motor Comments	
Forks Condition	Inspected	Differential Condition	
Forks Comments		Differential Comments	
Overhead Guard Condition	Inspected	Drive Tires % Remaining	50
Overhead Guard Comments		Drive Tires Condition	Inspected
Seat Condition		Steer Tires % Remaining	
Seat Comments		Steer Tires Condition	Inspected
General Appearance Condition	Inspected	Steer Axle Condition	
General Appearance Comments		Steer Axle Comments	
		Brakes Condition	Inspected
		Brakes Comments	

General Comments	Battery Present	Yes
	Charger Present	No
	Electrical Condition	Inspected
	Electrical Comments	

Inspector Company Name	Inspection Date	7/5/2023 10:20:09 AM
Inspector Name	jlew	

(* Legend: =Checked OK)
Inspected







WARNING

Trained Operators and Mechanics Only



Read Operating Manual located on or near seat.

Failure to follow operating, inspection and maintenance instructions can cause serious injury or death!



Model NTH450-110321
Serial Number 08110021165

Truck Forks 767 mm (30 in) USA Carriage - 1467 mm (57 in)

Cylin. EO 36 V088 Max A.H. 1240

Truck Weight/112.0 m³ Battery 2680 kg (5870 lb)

Truck Weight/Max Battery 4150 kg (9120 lb)

Allowable Battery Weight 840 kg (1850 lb) to 1070 kg (2350 lb)

Fork Width 1149 mm (45.3 in)

Wheel Base 1457 mm (57.4 in)

MAXIMUM CAPACITY	Load Height Dim. A	Load Center		
		Dim. B	Dim. C	Dim. D
1450 kg (3200 lb)	760 mm (30.2 in)	610 mm (24 in)	610 mm (24 in)	610 mm (24 in)
2040 kg (4500 lb)	4900 mm (193 in)	610 mm (24 in)	610 mm (24 in)	610 mm (24 in)



08110021165



