

CONDITION REPORT - ELECTRIC

Manufacturer	Model	Year	Serial Number
YALE	OS030BF	2019	E826N05037T

Mast		Hours	4923
Mast Height Lowered	10	Voltage	24 Volt
Mast Height Raised	25	Attachment	
Hydraulic Control Valve		Directional Control	
Capacity	2000	Tires	Non-Marking

Mast Condition		Steering Pump Condition	
Mast Comments		Steering Pump Comments	
Lift Cylinder Condition		Hydraulic Pump Condition	
Lift Cylinder Comments		Hydraulic Pump Comments	
Tilt Cylinder Condition		Hydraulic Motor Condition	
Tilt Cylinder Comments		Hydraulic Motor Comments	
Carriage Condition		Control System Condition	
Carriage Comments		Control System Comments	
Load Backrest Condition		Drive Motor Condition	
Load Backrest Comments		Drive Motor Comments	
Forks Condition		Differential Condition	
Forks Comments		Differential Comments	
Overhead Guard Condition		Drive Tires % Remaining	80
Overhead Guard Comments		Drive Tires Condition	
Seat Condition		Steer Tires % Remaining	
Seat Comments		Steer Tires Condition	Not-Selected
General Appearance Condition	Good	Steer Axle Condition	
General Appearance Comments		Steer Axle Comments	
		Brakes Condition	
		Brakes Comments	

General Comments

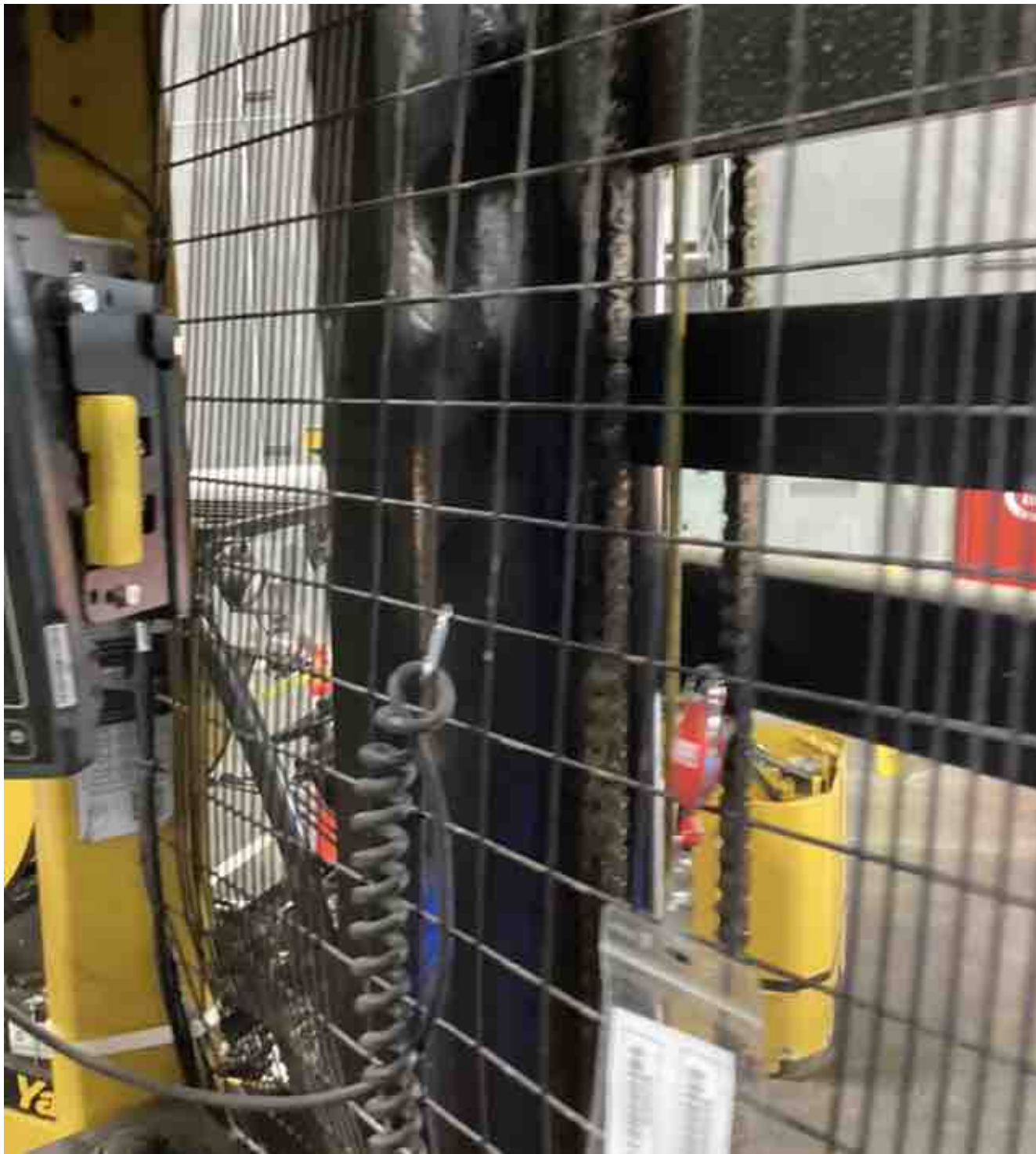
operator light and fan not working platform gate arms damaged drive unit cover damaged and hardware missing drive unit doors missing hardware

Battery Present	Yes
Charger Present	Yes
Electrical Condition	
Electrical Comments	

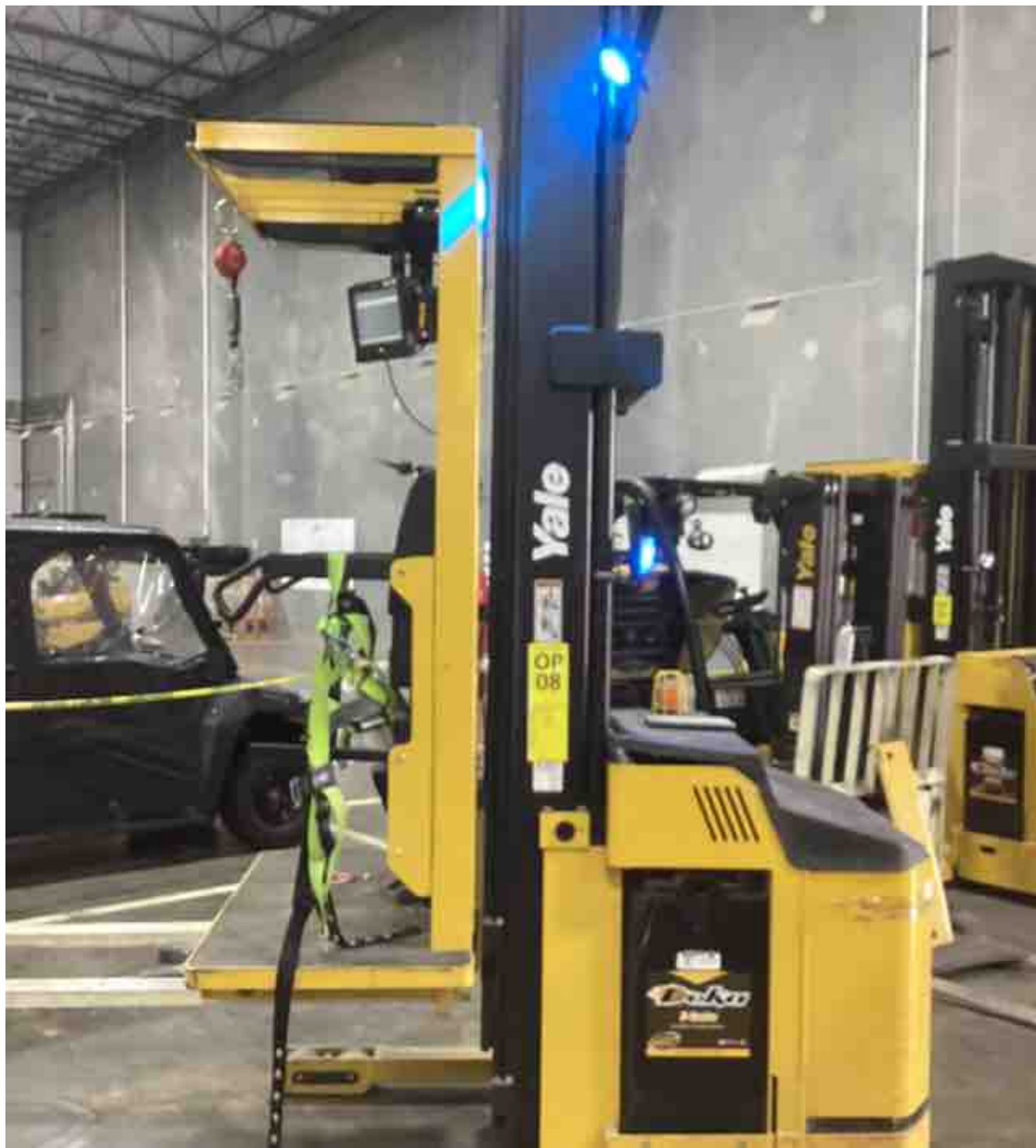
Inspector Company Name	eastern lift truck	Inspection Date	3/27/2023 9:25:58 PM
Inspector Name	Tjcolvin		

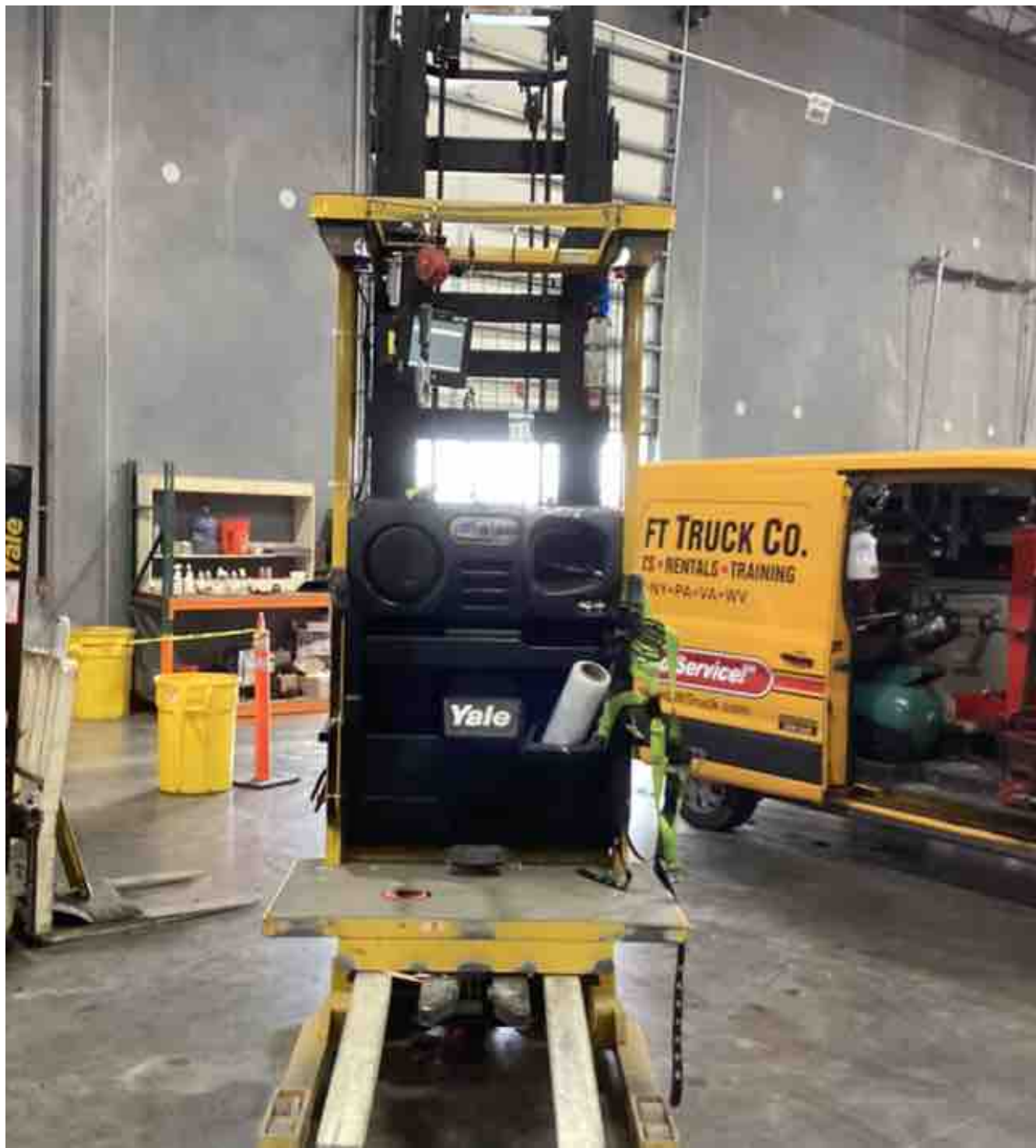
(* Legend: =Checked OK)





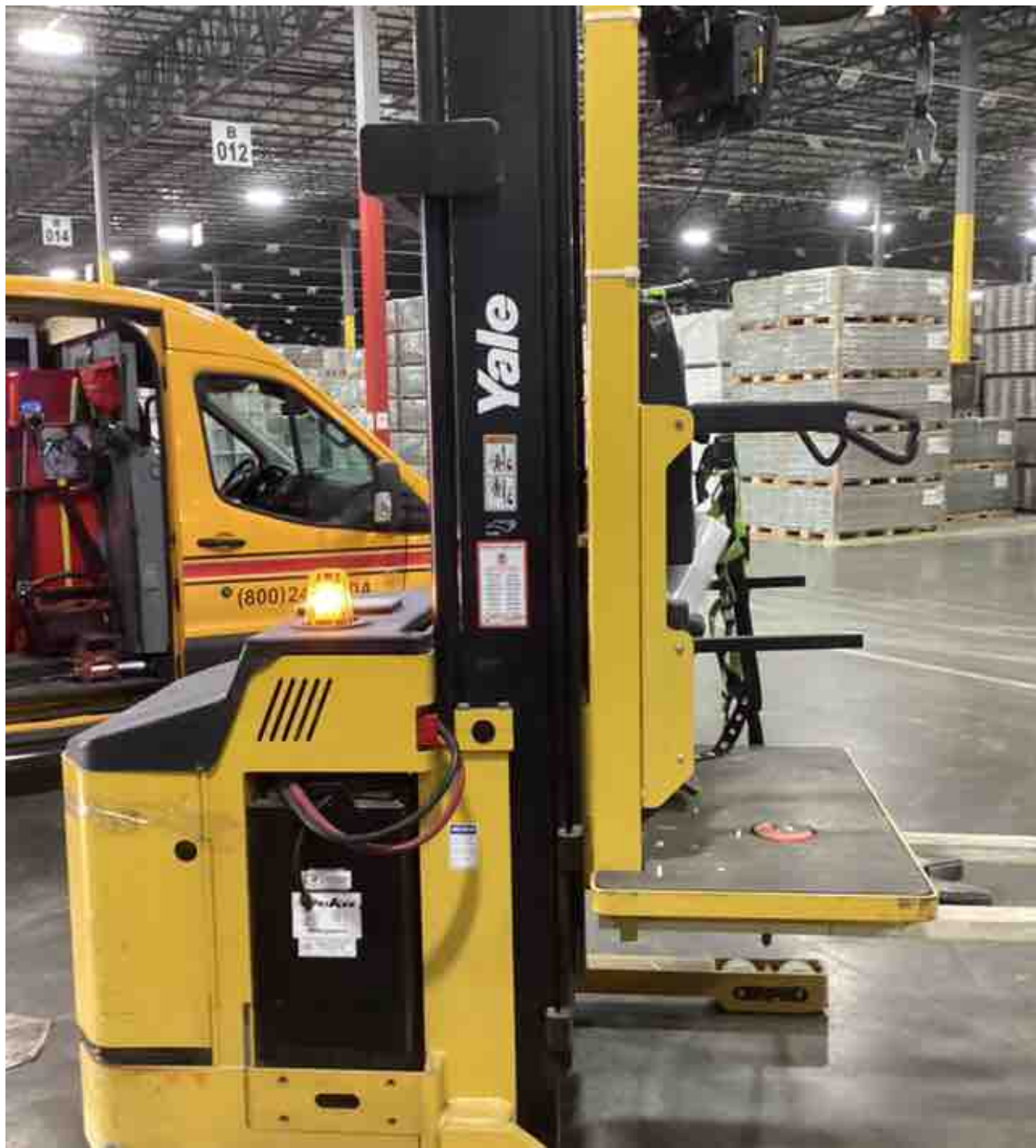




















A photograph of a yellow metal enclosure, possibly a control cabinet or power supply unit. The enclosure is made of heavy-duty metal plates with visible welds and some surface wear. At the top center, there is a circular opening. A white warning label is affixed to the upper front panel. The label features a black triangle with a lightning bolt symbol, indicating a high-voltage or electrical hazard. Below the symbol, there is a block of text, which is mostly illegible due to the image resolution. The enclosure is set against a dark background.

Warning
Electrical Hazard
High Voltage
Do not touch the internal components.
Always use proper safety procedures.
Refer to the user manual for more information.
The manufacturer is not responsible for any damage or injury caused by the use of this equipment.

Min Battery Wt 720 kg (1600 lb)
Max Battery Wt 860 kg (1900 lb)
Base Width 1220 mm (48 in)
Wheel Base 1440 mm (57.0 in)

Trained Operators and Mechanics Only

Read Operating Manual
Located on Drive Unit Cover

Failure to follow operating
maintenance instructions can
result in serious injury or death

**CAPACITY WITH MAST VERTICAL
AND EQUIPPED AS SHOWN**

MAXIMUM CAPACITY	910 kg (2000 lb)	1350 kg (3000 lb)
Load Height Dim. A	7620 mm (300 in)	7010 mm (276 in)
Load Height Dim. B	610 mm (24 in)	610 mm (24 in)
Load Height Dim. C	610 mm (24 in)	610 mm (24 in)

Serial Number: E828N050371



